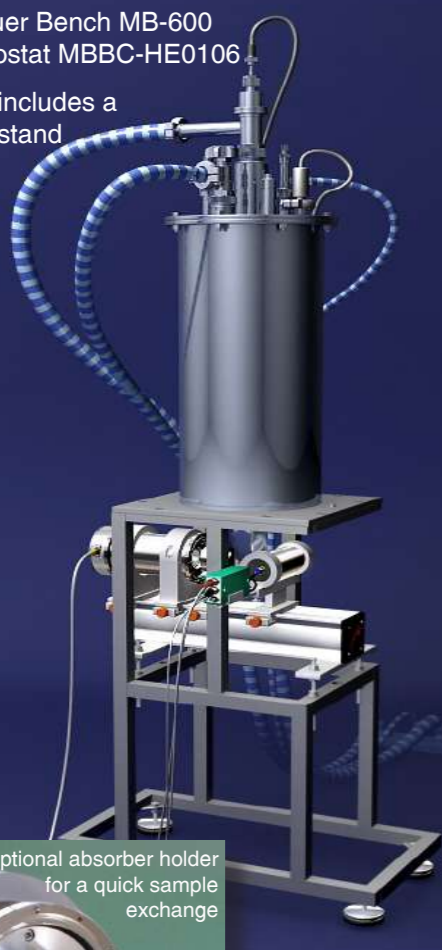


Mössbauer Bench MB-600
with Cryostat MBBC-HE0106

MB-600 includes a
cryostat stand



Optional absorber holder
for a quick sample
exchange



Temperature Controller TR-55



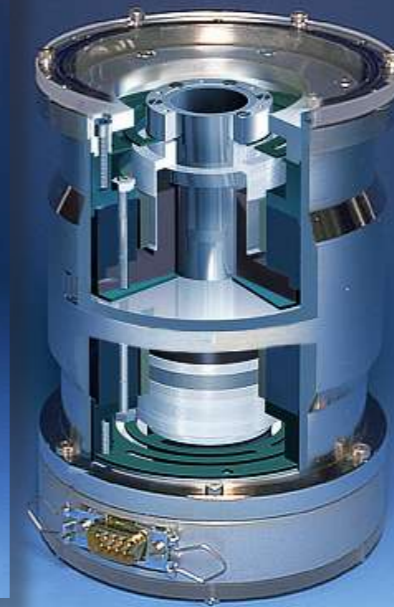
Mössbauer
Furnace
MBF-1100



Mössbauer Velocity Transducer
MVT-1000



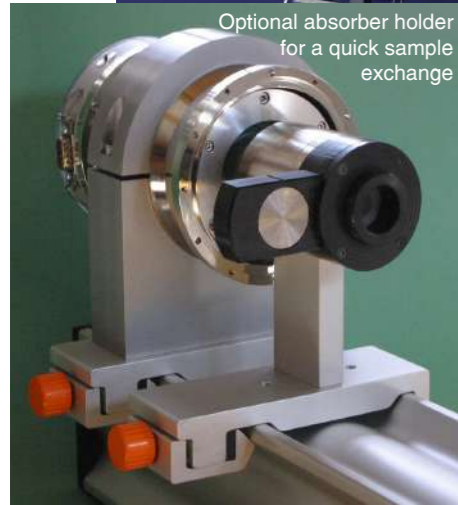
MVT-1000 in detail



Mössbauer source
with adapter
SA-1



Mössbauer absorber
Fe-57 foil



RiKon-5 mounted on
MB-500

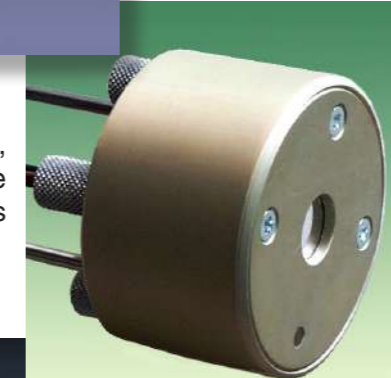


Cryostat RiKon-5-LNC
for CEMS Detector RiKon-5
mounted on Mössbauer Bench
MB-500 / MB-500 VT



Mössbauer Velocity
Transducer
MA-260

CEMS Detector RiKon-5,
suitable for low temperature
measurements



RiKon-5 Anode Wire
Cassette



LASER
CALIBRATION
The easy way
to exact results

MVC-450
MDU-1200
MVT-1000



Mössbauer Bench MB-500



Data Acquisition Module CMCA-550

WISSENSCHAFTLICHE ELEKTRONIK GMBH

Würmstrasse 8 • D-82319 Starnberg • Germany

☎ (+49)/(0) - 8151-9025-0 📠 (+49)/(0) - 8151-9025-10

e-mail info@wissel.eu

web www.wissel.eu

October 2007

Instruments for Mössbauer Spectroscopy



MA-260
Economy model
with ALNICO magnets

MA-260S
Standard model with
NdFeB and SmCo₅
magnets

Mössbauer Velocity Transducers



MVT-1000
Top model with NdFeB
and SmCo₅ magnets

Digital Function Generators



DFG-500
Sine, Constant
Acceleration (triangle),
512 / 1024 channels
1 - 100 Hz



DFG-1000
Standard Model
Sine,
Constant Acceleration
(triangle),
Constant Velocity
(with different slopes),
control signals
128 - 4096 channels
1 - 100 Hz



DFG-1200
Top Model
Sine,
Constant Acceleration
(triangle),
Constant Velocity
(with different slopes),
Region-of-Interest
control signals
128 - 4096 channels
1 - 100 Hz

HVS-2
High-Voltage
Supply



AMP-1000
Spectroscopy
Amplifier



MR-260
Standard
Mössbauer
Drive Unit



MR-260A
Mössbauer
Drive Unit
with error
minimisation
facility and
error display

MRG-500
Standard Mössbauer Drive Unit
with digital function generator
(MR-260 with DFG-500)



Mössbauer Drive Units



MR-360
Mössbauer Drive Unit
with
error minimisation
facility, error display
and velocity display
based on the
measurement of a
reference voltage
(MONITOR signal)

The Velocity Displays of MR-360 and MDU-1200

MR-360 Mössbauer Drive Unit measures the amplitude of an internal reference signal and displays a proportional value. Before adjusting the display, a Mössbauer calibration measurement must be performed. Later an occasional recalibration is required. **MDU-1200** Mössbauer Drive Unit displays a laser calibrated velocity value. For this it has to be connected with a HeNe laser calibrator e.g. model MVC-450.

MDU-1200
Mössbauer Drive Unit
with
error minimisation,
error display and
velocity display
based on
laser calibration



Laser Calibrator

MVC-450
Mössbauer Velocity Calibrator
based on a
HeNe laser interferometer



High Velocity Drive Units:

MA-260AH
MR-360H
MDU-1200H

MA-260AH
High Velocity
Drive Unit



LND-45431
Proportional
Counter with
Xe or Kr
filling



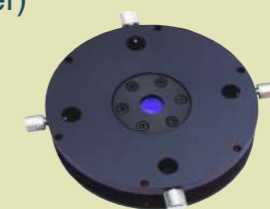
PEA-6A Preamp
& Main Amplifier



CMCA-550
Data Acquisition Module
for MCS and PHA.
Two windows, set in
PHA mode, can be used in MCS
mode.

- Mössbauer Source**
Detector
Preamp (& Main Amplifier)
Main Amplifier
NIM Bin
High-Voltage Supply
Data Acquisition Module
Mössbauer Bench
Radiation Protection Devices
NORMOS Fit Software
Furnace
Low Temperature Equipment

Accessories



Sealing Disk



PEA-6 Preamp



SA-1
Source Adapter